

IMPACT WRENCHES



How to select your tool

1 HANDLE TYPE



Pistol (P)

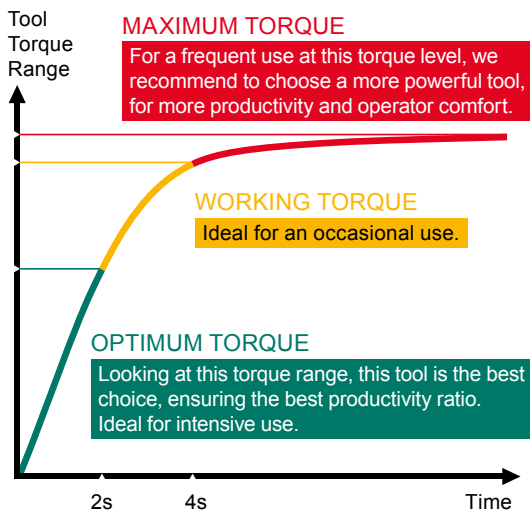


D-Handle (D)



T-Handle (T)

2 TORQUE



3 DIFFERENT CLUTCH MECHANISMS

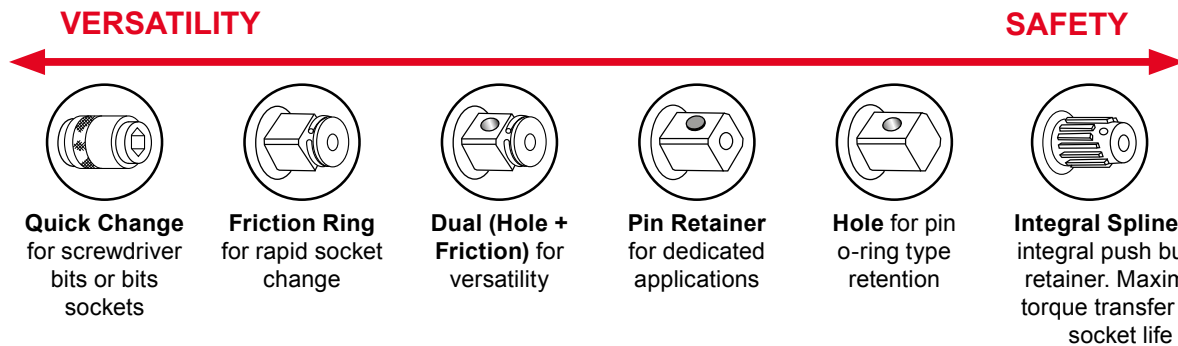
This table will help you to choose the right impact mechanism

Type of Clutches	Joint assembly			
	Very hard	Hard	Soft	Very soft
Pin clutch	✓	✓	✗	✗
Single dog clutch	✓	✓	✓	✗
Twin Hammer clutch (Double dog clutch)	✓	✓	✓	✗
Rocking dog clutch	✗	✓	✓	✓
2-Jaw clutch	✓	✓	✓	✓

Ultimate / Good / Possible / Not suitable




4 SQUARE DRIVE & SOCKET RETAINER

You will find on the market a wide selection of socket retainers, from the simple friction ring retention to dual retention and spline configurations for maximum power transfer and safety.






Impact Wrench Torque Ranges

INDUSTRIAL RANGE




DRIVE SQUARE	3/8" (HEX. 7/16")	1/2"	3/4"	1"	#5	1 1/2"	2 1/2"
 SUPER INDUSTRIAL		CP6738-P05R CP6500RS/RSR CP6748EX-P11R ATEX	CP6060-P15H/R CP6768EX-P18D	CP6070-P15H CP6778EX-P18D CP0611-PRQ CP0611-D28H	CP0611P RLS CP0611-D28L CP6120-D25L	CP6135-D80 CP6120-D35H CP6130-T70	CP6240-T120
 INDUSTRIAL MAINTENANCE AND PRODUCTION	CP6300RSR CP8222-RI-P CP8232-QC (7/16 hex) CP6728-P05R	CP8242-RI-P CP8252-RI-P CP9541/42 CP7748 CP8854/2	CP9561 CP8272-DI-P CP7769 CP6763 CP6763-D18D	CP6773 CP7773 CP6910-P24 CP6773-D18D CP6920-D24		CP6930-D35	
 GENERAL MAINTENANCE	CP7721 CP7731 CP7731C	CP7737 CP734H CP7732-C CP7739 CP7741-2 CP749	CP772H CP7762 CP7763/-6	CP7779 CP7783/-6 CP7782/-6			

BOLTS TABLE (IMPERIAL)

RECOMMENDED TORQUE (FT.LBS)	1/4"	5/16"	3/8"	7/16"	1/2"	9/16"	5/8"	3/4"	7/8"	1"	1-1/8"	1-1/4"	1-3/8"	1-1/2"
GRADE 5 	3	6	11	18	28	43	55	97	155	230	340	480	660	860
GRADE 8 	8	16	28	46	70	110	140	250	405	600	770	1,080	1,470	1,950
GRADE ASTM-A574 	11	23	40	65	99	159	198	350	566	848	1,245	1,750	2,375	3,125
ASTM A325*	-	-	-	-	-	-	200	355	570	850	1,060	1495	1,960	2,600
ASTM A490*	-	-	-	-	-	-	250	435	715	1,070	1,580	2,125	2,780	3,700

*Note: ASTM A325 and ASTM A490 bolts are used on structural steel applications. Torque and tension values are based on running the nut beyond the proof load of the bolt by turn-of-the-nut method.

BOLTS TABLE (METRIC)

RECOMMENDED TORQUE (NM)	M6	M8	M10	M12	M14	M16	M18	M20	M22	M24	M27	M30	M36	M42	M45	M48
8.8 	9,8	24	47	81	128	197	275	385	518	665	961	1,310	2,280	3,640	4,510	5,450
10.9 	14	33	65	114	181	277	386	541	728	935	1,350	1,840	3,210	5,110	6,340	7,660
12.9 	17	40	79	136	217	333	463	649	874	1,120	1,620	2,210	3,850	6,140	7,660	9160

Torque recommendations :

The torque is important to ensure the required clamping force.

The table shows the recommended max tightening torque for the most common types of screws and bolts: untreated, oil-smearred screws (friction coefficient = 0,125) with metric coarse thread.

The torque corresponds to approximately 62% of tensile stress.

M-Threaded screws and bolts

Impact wrenches

Output drive 3/8"



CP721

COMFORT & DURABILITY

FEATURES AND BENEFITS

- The metal motor housing with rocking dog impact mechanism guarantees smooth operation and a high durability
- A compact tool allowing easy access in tight applications
- A comfortable tool with built-in power regulator and ergonomic handle



CP7731

ULTRA COMPACT & POWERFUL

FEATURES AND BENEFITS

- Ultra compact tool with its 4.4" / 112 mm length which allows you to work in tight places
- Metal housing and jumbo hammer impact mechanism for high durability while also being extremely light and powerful.
- Easily adjustable one hand operation forward / reverse for either right or left-handed operation
- 3 setting positions for better versatility



CP7731C

ULTRA COMPACT & POWERFUL

FEATURES AND BENEFITS

- Ultra compact tool with its 4.3" / 108 mm length allowing for work in tight places
- Composite housing, jumbo hammer impact mechanism, and steel motor for high durability while also being very light and powerful
- Easily adjustable one hand operation forward / reverse (side2side selector) with 2 positions in reverse (max and low torque)
- Curved handle with Thermoplastic injected rubber for better handling
- Composite ultra-lightweight housing

See accessories page 63

MODEL	PART NUMBER	DRIVE	IMPACT MECHANISM	BLOWS PER MINUTE	FREE SPEED	WORKING TORQUE (FW)	MAX TORQUE (REV)	NET WEIGHT	LENGTH	AIR CONS @LOAD	VIBRATION LEVEL ISO 28927 (MS2)	SOUND PRESS.	SOUND POWER	AIR INLET						
		in.			rpm	ft.lb	Nm	lb	kg	cfm	a	dB(A)	W	in.						
CP721	T021963	3/8	Rocking dog	1620	9000	5.2-50.2	7-68	75	102	2.65	1.2	5.75	146	10	4.7	4.7	3.3	87	98	1/4
CP7731	8941077310	3/8	Single hammer	1200	6400	70.8-242	96-328	306	415	2.87	1.3	4.41	112	18	8.3	8.5	1.5	93	104	1/4
CP7731C	8941077311	3/8	Single hammer	1400	11000	61.2-289	83-392	346	469	2.2	1	4.33	110	16.7	7.9	10.33	1.4	96	107	1/4

All models: Hose int. 3/8" (10 mm) - @90 PSI (@6.3 Bar)

Listed specifications are for reference only. Please check documents in each tool.

Output drive 3/8"



CP6300 RSR

POWERFUL, LIGHTWEIGHT & DURABLE FOR INDUSTRIAL APP

FEATURES AND BENEFITS

- Reliable single dog clutch mechanism for MRO application
- Perfect control with a 4-position regulator and teasing trigger
- Durable aluminium body and robust steel clutch housing for extreme durability.
- Comfortable handle with rubber grip



CP8222-P

VERSATILE, ROBUST & COMFORTABLE

FEATURES AND BENEFITS

- The twin hammer clutch mechanism offers a high power/weight ratio.
- Low vibration sensation for operator comfort, even at very high torque.
- Lightweight composite body and aluminium clutch housing
- 3 power settings ensure high progressive maximum torque for smooth operation.
- Integrated suspension bail for use with balancer



CP6728-P05R

NEW RANGE - PREMIUM COMPOSITE!

FEATURES AND BENEFITS

- Reliable twin hammer clutch mechanism in oil bath for hard joint applications.
- ATEX certified IP6 dust-proof
- Square drive shaft with ring or dual version for a wide variety of applications
- Low noise and low vibration for operator comfort
- Comfortable handle with rubber grip & suspension bail included

CP8222-R

Same as CP8222-P with friction ring socket retainer

CP8232-QC

Same as CP8222-P with Quick Change retainer and 7/16" hexagonal drive

See accessories page 63

MODEL	PART NUMBER	DRIVE	IMPACT MECHANISM	BLOWS PER MINUTE	FREE SPEED	WORKING TORQUE (FW)	MAX TORQUE (REV)	NET WEIGHT	LENGTH	AIR CONS @LOAD	VIBRATION LEVEL ISO 28927 (M/S ²)	SOUND PRESS.	SOUND POWER	AIR INLET						
		in.		rpm	ft.lb	Nm	ft.lb	Nm	lb	kg	in.	mm	cfm	l/s	a	k	ISO 15744 - dB(A)	in.		
CP6300 RSR	T025285	3/8	Single hammer	1800	6800	39.8-150	54-203	179	243	3.53	1.6	5.98	152	14	6.6	5	1.6	90	101	1/4
CP8222-P	6151590180	3/8	Twin hammer	1250	11500	59-295	80-400	332	450	2.65	1.2	6.97	177	10	10	5.8	2.4	89	100	1/4
CP8222-R	6151590230	3/8	Twin hammer	1250	11500	59-295	80-400	332	450	2.65	1.2	6.97	177	10	10	5.8	2.4	89	100	1/4
CP8232-QC	6151590190	7/16	Twin hammer	1250	11500	59-295	80-400	332	450	3.09	1.4	6.97	177	10	21.2	6.6	3.2	89	100	1/4
CP6728-P05R	6151590550	3/8	Twin hammer	1,300	11500	81.1-258	110-350	350	475	3.75	1.7	6.89	175	11.4	24.2	5.2	1.9	89	100	1/4

All models: Hose int. 3/8" (10 mm) - @90 PSI (@6.3 Bar)

Listed specifications are for reference only. Please check documents in each tool.

Impact wrenches

Output drive 1/2"



CP7737

COMPACT, LIGHTER, POWERFUL AND DURABLE

FEATURES AND BENEFITS

- A compact tool with direct drive transmission mechanism for tight applications
- Single handed Forward – Reverse operation with 3 power settings in forward and 1 in reverse
- Over moulded composite and ergonomically designed handle to fit the hand perfectly and offer better comfort
- Metal housing, jumbo hammer impact mechanism, and steel motor for high durability
- Full teasing trigger for better control



CP734H

THE "CLASSIC" REFERENCE FOR 1/2"

FEATURES AND BENEFITS

- Metal motor housing with pin clutch mechanism in oil bath (dyna-pact) for high durability and smooth operations
- Comfortable tool with rubber grip and reverse button with 4 positive power settings



CP7732

ULTRA COMPACT & POWERFUL

FEATURES AND BENEFITS

- Ultra compact tool with its 4.4" / 112 mm length which allows you to work in tight places
- Metal housing and jumbo hammer impact mechanism for high durability while also being extremely light and powerful.
- Easily adjustable one hand operation forward / reverse for either right or left-handed operation
- 3 setting positions for better versatility



CP7732C

Same features as CP7732 more compact

See accessories page 63

MODEL	PART NUMBER	DRIVE	IMPACT MECHANISM	BLOWS PER MINUTE	FREE SPEED	WORKING TORQUE (FW)	MAX TORQUE (REV)	NET WEIGHT	LENGTH	AIR CONS @LOAD	VIBRATION LEVEL ISO 28927 (M/S2)	SOUND PRESS.	SOUND POWER	AIR INLET						
		in.			rpm	ft.lb	Nm	lb	kg	in.	mm	cfm	l/s	a	k	ISO 15744 - dB(A)	in.			
CP7737	8941077370	1/2	Single hammer	1600	9000	25.1-165	34-224	221	300	2.49	1.13	9.45	240	16	7.5	10.3	1.3	93	104	1/4
CP734H	T024351	1/2	Pin clutch	1020	8400	25.1-310	34-420	425	576	5.11	2.32	7.52	191	15	7.1	7.2	3.3	93	104	1/4
CP7732	8941077320	1/2	Single hammer	1400	9000	102-310	138-420	450	610	2.87	1.3	4.41	112	19.6	9	12.1	4.4	95	106	1/4
CP7732C	8941077321	1/2	Single hammer	1400	9410	51.6-285	70-387	461	625	2.2	1	4.25	108	7.5	10.2	10.8	1.4	95.5	106.5	1/4

All models: Hose int. 3/8" (10 mm) - @90 PSI (@6.3 Bar)

Listed specifications are for reference only. Please check documents in each tool.

Output drive 1/2"



CP7739

SIDE2SIDE: REVERSE TECHNOLOGY FOR BALANCE & POWER

FEATURES AND BENEFITS

- Lightweight composite housing, twin hammer impact mechanism, and magnesium clutch housing for high durability
- Side-2-Side reverse / forward technology with 3 positive power settings to maximise operator comfort



CP7741

QUALITY OR AFFORDABILITY, WHY HAVE TO CHOOSE?

FEATURES AND BENEFITS

- Qualitative parts as well as its attractive price makes of this series, a good quality & value for money one.
- With only 2.25kg and being 15% lighter than its former version, the CP7741 offers high comfort to its operators.
- Less heat transfer between the motor and the handle is provided thanks to its composite housing



CP749

POWERFUL & ROBUST, BETTER ERGONOMICS

FEATURES AND BENEFITS

- Metal motor housing with CP's patented clutch in oil bath for high durability.
- 4-power settings for better versatility
- Compact design with comfortable contoured handle

CP7729

Same features as CP7739 with 3/8" output drive.

CP7729-P

3/8" output drive and pin retainer.



CP7741-2

Same features as CP7741 with long anvil

See accessories page 63

MODEL	PART NUMBER	DRIVE	IMPACT MECHANISM	BLOWS PER MINUTE	FREE SPEED	WORKING TORQUE (FW)	MAX TORQUE (REV)	NET WEIGHT	LENGTH	AIR CONS @LOAD	VIBRATION LEVEL ISO 28927 (M/S ²)	SOUND PRESS.	SOUND POWER	AIR INLET						
		in.		rpm	rpm	ft.lb	Nm	lb	kg	in.	mm	cfm	l/s	a	k	ISO 15744 - dB(A)	in.			
CP7739	8941077390	1/2	Twin hammer	1700	9900	50.2-305	68-414	450	610	2.65	1.2	6.42	163	20	9.4	6.9	2.5	92	103	1/4
CP749	T024587	1/2	Twin hammer	1320	6400	50.2-450	68-610	610	827	5.51	2.5	7.01	178	22	10.4	6.2	2	96	107	1/4
CP7741	8941077410	1/2	Twin hammer	-	10000	88.5-509	120-690	715	970	4.96	2.25	7.64	194	-	-	8.5	2.7	93	104	1/4
CP7741-2	8941077412	1/2	Twin hammer	-	10000	88.5-509	120-690	715	970	5.18	2.35	9.65	245	-	-	9.4	3.8	93	104	1/4
CP7729	8941077290	3/8	Twin hammer	1700	9400	50.2-300	68-407	415	563	2.76	1.25	6.42	163	20	9.4	6.4	1.9	91	102	1/4
CP7729-P	8941077292	3/8	Twin hammer	1700	9400	50.2-300	68-407	415	563	2.76	1.25	6.42	163	20	9.4	6.4	1.9	91	102	1/4

All models: Hose int. 3/8" (10 mm) - @90 PSI (@6.3 Bar)

Listed specifications are for reference only. Please check documents in each tool.

Impact wrenches



CP8252-P

Output 1/2"

VERSATILE, ROBUST & COMFORTABLE

Designed for intensive use in industrial maintenance and productions, the CP822/32/42/52/72 series is an ultralight, high torque tool for 3/8", 7/16" Hex, 1/2", and 3/4" drive bolting applications.



FEATURES AND BENEFITS

- The twin hammer clutch mechanism offers a high power/weight ratio.
- Low vibration sensation for operator comfort, even at very high torque.
- Lightweight composite body and aluminium clutch housing
- 3 power settings ensure high progressive maximum torque for smooth operation.
- Integrated suspension bail for use with balancer

CP8242-R

Same features as CP8252-P with friction ring socket retainer and in 2.6 lbs body

CP8242-P

Same features as CP8252-P in 2.65Lbs body weight

CP8252-R

Same features as CP8252-P with friction ring socket retainer

See accessories page 63

MODEL	PART NUMBER	DRIVE	IMPACT MECHANISM	BLOWS PER MINUTE	FREE SPEED	WORKING TORQUE (FW)		MAX TORQUE (REV)		NET WEIGHT		LENGTH		AIR CONS @LOAD		VIBRATION LEVEL ISO 28927 (M/S ²)		SOUND PRESS.	SOUND POWER	AIR INLET
						ft.lb	Nm	ft.lb	Nm	lb	kg	in.	mm	cfm	l/s	a	k	ISO 15744 - dB(A)	in.	
CP8242-P	6151590200	1/2	Twin hammer	1250	11500	59-295	80-400	406	550	2.65	1.2	6.97	177	21.2	10	6.6	3.2	89	100	1/4
CP8242-R	6151590240	1/2	Twin hammer	1250	11500	59-295	80-400	406	550	2.65	1.2	6.97	177	21.2	10	6.6	3.2	89	100	1/4
CP8252-P	6151590210	1/2	Twin hammer	1400	9000	111-553	150-750	701	950	4.41	2	7.87	200	25.4	12	8.8	3.6	94	105	1/4
CP8252-R	6151590250	1/2	Twin hammer	1400	9000	111-553	150-750	701	950	4.41	2	7.87	200	25.4	12	8.8	3.6	94	105	1/4

All models: Hose int. 3/8" (10 mm) - @90 PSI (@6.3 Bar)

Listed specifications are for reference only. Please check documents in each tool.

Output drive ”



CP9541

THE INDUSTRIAL GRADE OF THE "CLASSIC"

FEATURES AND BENEFITS

- DYNA-PACT - with oil bath clutch for high durability
- Durable aluminium body and robust steel clutch housing for extreme durability.
- Power control through a multi-position regulator at handle level



CP7748

POWER & COMFORT IN YOUR HANDS!

FEATURES AND BENEFITS

- 960 ft.lbs / 1,300 Nm of max torque in reverse position for high productivity
- Composite housing, twin hammer impact mechanism, hard anodized end plates, and hard chromium aluminum cylinder for high durability
- Lightweight (4.65 lbs – 2.11 kg) and compact (8.86 in. / 225 mm long) for improved comfort
- One-hand reverse system (Ring system) for better ergonomics
- Curved rubber handle to help prevent slipping

CP9542

Same features as CP9541 with pin socket retainer

CP7748-2

Same features as CP7748 with long anvil

CP7748-P

Same features as CP7748 with a pin socket retainer



See accessories page 63

MODEL	PART NUMBER	DRIVE	IMPACT MECHANISM	BLOWS PER MINUTE	FREE SPEED	WORKING TORQUE (FW)		MAX TORQUE (REV)		NET WEIGHT		LENGTH		AIR CONS @LOAD		VIBRATION LEVEL ISO 28927 (M/S ²)		SOUND PRESS.	SOUND POWER	AIR INLET
				rpm	ft.lb	Nm	ft.lb	Nm	lb	kg	in.	mm	cfm	l/s	a	k	ISO 15744 - dB(A)	in.		
CP9541	6151909541	1/2	Pin clutch	1100	8900	25.1-320	34-434	450	610	5.51	2.5	6.61	168	13	6.1	5.5	2.5	89	100	1/4
CP9542	6151909542	1/2	Pin clutch	1100	8900	25.1-320	34-434	450	610	5.51	2.5	6.61	168	13	6.1	5.5	2.5	89	100	1/4
CP7748	8941077481	1/2	Twin hammer	1350	7000	70.1-553	95-750	959	1300	4.41	2	6.89	175	25	12	12	4.5	94.3	105.3	1/4
CP7748-2	8941077486	1/2	Twin hammer	1350	7000	70.1-553	95-750	959	1300	4.65	2.11	8.86	225	25	12	11.3	3.8	94.3	105.3	1/4
CP7748-P	8941177484	1/2	Twin hammer	1350	7000	70.1-553	95-750	959	1300	4.65	2.11	8.86	225	25	12	12	3.8	94.3	105.3	1/4

All models: Hose int. 3/8" (10 mm) - @90 PSI (@6.3 Bar)

Listed specifications are for reference only. Please check documents in each tool.

Impact wrenches

Output drive 1/2"



CP6738-P05R

PREMIUM COMPOSITE!

FEATURES AND BENEFITS

- Reliable twin hammer clutch mechanism in oil bath for hard joint applications.
- ATEX certified IP6 dust-proof
- Square drive shaft with ring or dual version for a wide variety of applications
- Low noise and low vibration for operator comfort
- Comfortable handle with rubber grip & suspension bail included



CP6500-RSR

THE BEST HEAVY-DUTY 1/2" FOR THE TOUGHEST JOBS !

FEATURES AND BENEFITS

- Reliable twin hammer clutch mechanism in oil bath for hard joint application
- Square drive shaft with ring or pin version for a wide variety of applications
- Durable aluminium body and robust steel clutch housing for extreme durability.
- Comfortable handle with rubber grip

CP6500-RS

Same features as CP6500-RSR with pin socket retainer

See accessories page 63

MODEL	PART NUMBER	DRIVE	IMPACT MECHANISM	BLOWS PER MINUTE	FREE SPEED	WORKING TORQUE (FW)		MAX TORQUE (REV)		NET WEIGHT		LENGTH		AIR CONS @LOAD		VIBRATION LEVEL ISO 28927 (MS2)		SOUND PRESS.	SOUND POWER	AIR INLET
						ft.lb	Nm	ft.lb	Nm	lb	kg	in.	mm	cfm	l/s	a	k	ISO 15744 - dB(A)	in.	
CP6738-P05R	6151590560	1/2	Twin hammer	1300	11500	81.1-258	110-350	350	475	3.75	1.7	6.89	175	24.2	11.4	5.2	1.9	89	100	1/4
CP6500-RS	T025214	1/2	Twin hammer	1320	6400	125-502	170-680	627	850	5.84	2.65	7.01	178	25	11.8	8	2.5	96	107	1/4
CP6500-RSR	T025216	1/2	Twin hammer	1320	6400	125-502	170-680	627	850	5.84	2.65	7.01	178	25	11.8	8	2.5	96	107	1/4

All models: Hose int. 3/8" (10 mm) - @90 PSI (@6.3 Bar)

Listed specifications are for reference only. Please check documents in each tool.

Impact wrenches

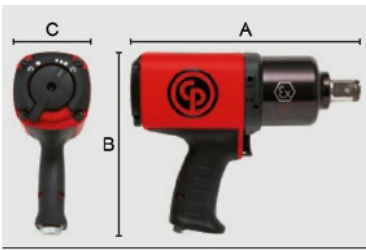


CP6748EX-P11R ATEX

Output 1/2"

PREMIUM COMPOSITE!

Premium composite impact wrench range - from 3/8" to 1" - with superior durability designed for intensive use in ATEX environments.



MODEL	A		B		C	
	in.	mm	in.	mm	in.	mm
CP6748	7.3	185	7.9	200	2.8	72
CP6768	9.8	250	8.3	210	3.5	90
CP6778	10.0	255	8.3	210	3.5	90



FEATURES AND BENEFITS

- Reliable twin hammer clutch mechanism in oil bath for hard joint applications.
- ATEX certified IP6 dust-proof
- Square drive shaft with ring or dual version for a wide variety of applications
- Low noise and low vibration for operator comfort
- Comfortable handle with rubber grip & suspension bail included

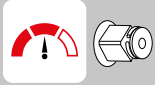
See accessories page 63

MODEL	PART NUMBER	DRIVE	IMPACT MECHANISM	BLOWS PER MINUTE	FREE SPEED	WORKING TORQUE (FW)	MAX TORQUE (REV)	NET WEIGHT	LENGTH	AIR CONS @LOAD	VIBRATION LEVEL ISO 28927 (M/S ²)	SOUND PRESS.	SOUND POWER	AIR INLET						
		in.		rpm	ft.lb	Nm	ft.lb	lb	in.	cfm	l/s	ISO 15744 - dB(A)		in.						
CP6748EX-P11R ATEX	6151590570	1/2	Twin hammer	1200	8400	133-561	180-760	800	1080	5.29	2.4	7.87	200	30	14.2	8.7	2.2	93	104	1/4

All models: Hose int. 3/8" (10 mm) - @90 PSI (@6.3 Bar)

Listed specifications are for reference only. Please check documents in each tool.

Cordless Impact wrenches

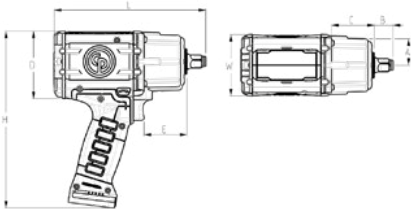


CP8854 SERIES

Output drive 1/2"

A 2-IN 1 UNIQUE TECHNOLOGY FOR LIGHT VEHICLE TIRE CHANGING

2 in 1 unique technology designed to turn performance, lightweight and the compact features of an air impact wrench into a cordless tool. The CP8854 series is designed for light vehicle tire changing applications in workshops and roadside assistance.



MODEL		A	B	C	D	E	H	L	W
CP8854	in.	1.30	0.94	2.09	3.31	2.13	8.7	7.44	3.03
	mm	33	24	53	84	54	220	189	77
CP8854-2	in.	1.30	0.94	2.09	3.31	2.13	8.7	9.41	3.03
	mm	33	24	53	84	54	220	240	77

CP8854 BARE TOOL

Same features as CP8854 without batteries and charging station.

FEATURES AND BENEFITS

- Similar in length and weight to high performance 1/2" air Impacts. It offers great maneuverability and helps prevent arm injuries
- Lowest vibration on the market (9.3 m/s²) and noise level rate (87 db(A))
- High performance 4500 RPM. Able to deliver 780 ft.lbs. – 1050 Nm maximum torque in reverse
- One Shut Off Position in Forward means no more overtightening
- No more hand tightening for better productivity with the snugging feature (2 stage trigger in Forward)

See accessories page 63

MODEL	PART NUMBER	DRIVE	FREE SPEED	WORKING TORQUE (FW)	MAX TORQUE (REV)	WEIGHT	LENGTH	HEIGHT	WIDTH	VIBRATION LEVEL ISO 28927 (M/S ²)	SOUND PRESS.	SOUND POWER	BATTERY								
		in.	rpm	ft.lb	Nm	ft.lb	Nm	lb	kg	in.	mm	in.	mm	in.	mm	a	k	ISO 15744 - dB(A)	V	Ah	
CP8854 BARE TOOL	8941088548	1/2	4500	0-88.5	0-120	774	1,050	4.63	2.1	7.44	189	8.7	221	3.03	77	9.3	3.1	87	98	2.5	18 V
CP8854 Pack 18V	8941088540	1/2	4500	0-88.5	0-120	774	1,050	5.51	2.5	7.44	189	8.7	221	3.03	77	9.3	3.1	87	98	2.5	18 V
CP8854-2 BARE TOOL	8941088549	1/2	4500	0-88.5	0-120	774	1,050	4.78	2.17	9.41	239	8.7	221	3.03	77	9.3	3.1	87	98	2.5	18 V
CP8854-2 Pack 18V	8941088542	1/2	4500	0-88.5	0-120	774	1,050	5.73	2.6	9.41	239	8.7	221	3.03	77	9.3	3.1	87	98	2.5	18 V

Listed specifications are for reference only. Please check documents in each tool.

Impact wrenches

Output drive 3/4"



CP772H

THE UNMATCHED "REFERENCE" IN 3/4" IMPACT

FEATURES AND BENEFITS

- Metal motor housing with pin clutch mechanism in oil bath (dyna-act) for high durability and smooth operations
- Comfortable tool with rubber grip and reverse button with 4 positive power settings



CP7762

ULTRA COMPACT, LIGHTWEIGHT AND POWERFUL

FEATURES AND BENEFITS

- Ultra compact and lightweight tool to lower operator fatigue while working in restricting spaces.
- 1,050 ft.lbs / 1,420 Nm of max torque in reverse position for high productivity
- Metal housing, twin hammer impact mechanism, and steel motor for high durability
- One hand Forward & Reverse speed regulator button and full teasing trigger for improved ergonomics



CP7763

COMPACT & POWERFUL

FEATURES AND BENEFITS

- Composite housing and twin hammer impact mechanism for high durability
- A lightweight and compact tool in a composite motor housing that offers greater comfort
- Equipped with intuitive Forward / Reverse lever for easy operation
- Power regulator for a controlled approach



CP7763-6

Same features as CP7763 with long anvil

See accessories page 63

MODEL	PART NUMBER	DRIVE	IMPACT MECHANISM	BLOWS PER MINUTE	FREE SPEED	WORKING TORQUE (FW)	MAX TORQUE (REV)	NET WEIGHT	LENGTH	AIR CONS @LOAD	VIBRATION LEVEL ISO 28927 (M/S ²)	SOUND PRESS.	SOUND POWER	AIR INLET						
		in.		rpm	rpm	ft.lb	Nm	lb	kg	cfm	l/s	a	k	ISO 15744 - dB(A)						
CP772H	T024598	3/4	Pin clutch	900	4200	150-700	203-949	1000	1350	10.4	4.76	9.65	245	24	11.3	5.8	2	96	107	3/8
CP7762	8941077620	3/4	Twin hammer	960	4850	148-664	201-900	1050	1420	6.39	2.9	6.22	158	24.7	16.4	10.7	2.8	92.8	103.8	3/8
CP7763	8941077630	3/4	Twin hammer	900	6300	100-950	136-1280	1200	1630	11.5	5.25	9.02	229	24.7	16.4	10.4	4.2	96	107	3/8
CP7763-6	8941077636	3/4	Twin hammer	900	6300	100-950	136-1280	1200	1630	13.8	6.28	15	381	24.7	16.4	10.4	4.2	96	107	3/8

All models: Hose int. 3/8" (10 mm) - @90 PSI (@6.3 Bar)

Listed specifications are for reference only. Please check documents in each tool.

Impact wrenches

Output drive 3/4"



CP9561

THE INDUSTRIAL GRADE OF THE "CLASSIC"

FEATURES AND BENEFITS

- DYNA-PACT - Pin clutch with oil bath for high reliability
- Durable aluminium body and robust steel clutch housing for extreme durability.
- Power control through a multi-position regulator at handle level



CP8272-D

VERSATILE, ROBUST & COMFORTABLE

FEATURES AND BENEFITS

- The twin hammer clutch mechanism offers a high power/weight ratio.
- Low vibration sensation for operator comfort, even at very high torque.
- Lightweight composite body and aluminium clutch housing
- 3 power settings ensure high progressive maximum torque for smooth operation.
- Integrated suspension bail for use with balancer



CP7769

POWERFUL, LIGHTWEIGHT & COMPACT

FEATURES AND BENEFITS

- 1,440 ft.lbs (1,950 Nm) of max torque in reverse position for high productivity
- Composite housing and twin hammer impact mechanism for high durability
- Due to its composite motor housing, it is both lightweight and compact, offering improved comfort.
- One-hand power adjustment and reverse system - S2S technology - thereby limiting wrist and arm fatigue.

CP8272-P

Same features as CP8272-D with pin socket retainer

CP7769-P

Same features as CP7769 with a pin socket retainer



See accessories page 63

MODEL	PART NUMBER	DRIVE	IMPACT MECHANISM	BLOWS PER MINUTE	FREE SPEED	WORKING TORQUE (FW)	MAX TORQUE (REV)	NET WEIGHT	LENGTH	AIR CONS @LOAD	VIBRATION LEVEL ISO 28927 (M/S ²)	SOUND PRESS.	SOUND POWER	AIR INLET
		in.			rpm	ft.lb	Nm	lb	mm	cfm	a	ISO 15744 - dB(A)		in.
CP9561	6151909561	3/4	Pin clutch	900	5500	148-701	200-950	922	216	30	7.7	100	111	3/8
CP8272-P	6151590220	3/4	Twin hammer	1000	6500	184-922	250-1250	1220	230	38	15.5	96	107	3/8
CP8272-D	6151590260	3/4	Twin hammer	1000	6500	184-922	250-1250	1220	230	38	15.5	96	107	3/8
CP7769	8941077691	3/4	Twin hammer	1200	6500	300-1,080	407-1460	1440	200	31	12.97	96.8	107.8	3/8
CP7769-P	8941077692	3/4	Twin hammer	1200	6500	300-1,080	407-1460	1440	200	31	12.97	96.8	107.8	3/8

All models: Hose int. 3/8" (10 mm) - @90 PSI (@6.3 Bar)

Listed specifications are for reference only. Please check documents in each tool.

Output drive 3/4"



CP6763



CP6763-D18D

COMPACT, ROBUST & POWERFUL FOR INDUSTRIAL MAINTENANCE

FEATURES AND BENEFITS

- Powerful hard hitting twin hammer clutch mechanism
- Flexibility and safety is guaranteed with the double hole and ring retaining system.
- Steel clutch housing and aluminium motor housing for robustness
- Short and narrow side-to-centre for easy access

See accessories page 63

MODEL	PART NUMBER	DRIVE	IMPACT MECHANISM	BLOWS PER MINUTE	FREE SPEED	WORKING TORQUE (FW)		MAX TORQUE (REV)		NET WEIGHT		LENGTH		AIR CONS @LOAD		VIBRATION LEVEL ISO 28927 (M/S ²)		SOUND PRESS.	SOUND POWER	AIR INLET
						ft.lb	Nm	ft.lb	Nm	lb	kg	in.	mm	cfm	l/s	a	k	ISO 15744 - dB(A)	in.	
CP6763	6151590400	3/4	Twin hammer	900	6300	258-952	350-1290	1200	1630	12.1	5.5	8.74	222	30	14.2	9.4	1.3	96	107	3/8
CP6763-D18D	6151590640	3/4	Twin hammer	730	6600	251-1,070	340-1450	1300	1760	14.5	6.6	11.42	290	41	19.3	11.4	2.9	98	109	1/2

All models: Hose int. 3/8" (10 mm) - @90 PSI (@6.3 Bar)

Listed specifications are for reference only. Please check documents in each tool.

Impact wrenches

Output drive 3/4"



CP6060-P15H

THE BEST SUPER INDUSTRIAL

FEATURES AND BENEFITS

- A very compact design to meet applications in very tight environments
- Reliable 2-jaw clutch mechanism for hard and soft joint application
- Low vibration feeling for operator comfort even at very high torque.
- Aluminium body and robust steel clutch housing provides enhanced durability
- Hole type socket retainer with O-ring for safety



CP6768EX-P18D

NEW RANGE - PREMIUM COMPOSITE!

FEATURES AND BENEFITS

- Reliable twin hammer clutch mechanism in oil bath for hard joint applications.
- ATEX certified IP6 dust-proof
- Square drive shaft with ring or dual version for a wide variety of applications
- Low noise and low vibration for operator comfort
- Comfortable handle with rubber grip & suspension bail included

CP6060-P15R

Same features as CP6060-P15H with friction ring socket retainer

See accessories page 63

MODEL	PART NUMBER	DRIVE	IMPACT MECHANISM	BLOWS PER MINUTE	FREE SPEED	WORKING TORQUE (FW)	MAX TORQUE (REV)	NET WEIGHT	LENGTH	AIR CONS @LOAD	VIBRATION LEVEL ISO 28927 (MS2)	SOUND PRESS.	SOUND POWER	AIR INLET						
		in.			rpm	ft.lb	Nm	lb	kg	in.	mm	cfm	l/s	a	k	ISO 15744 - dB(A)	in.			
CP6060-P15H	6151590090	3/4	2-jaws	1100	4000	199-900	270-1220	1100	1490	11.6	5.3	8.74	222	52.9	25	13.9	4.1	92	103	3/8
CP6060-P15R	6151590100	3/4	2-jaws	1100	4000	199-900	270-1220	1100	1490	11.6	5.3	8.74	222	52.9	25	13.9	4.1	92	103	3/8
CP6768EX-P18D	6151590580	3/4	Twin hammer	1050	5100	295-1,030	400-1400	1290	1750	9.7	4.4	9.84	250	38	18	9.4	2.4	94	105	3/8

All models: Hose int. 3/8" (10 mm) - @90 PSI (@6.3 Bar)

Listed specifications are for reference only. Please check documents in each tool.

Output drive 1"



CP7779

POWERFUL, LIGHTWEIGHT & COMPACT

FEATURES AND BENEFITS

- 1,440 ft.lbs (1,950 Nm) of max torque in reverse position for high productivity
- Composite housing and twin hammer impact mechanism for high durability
- Due to its composite motor housing, it is both lightweight and compact, offering improved comfort.
- One-hand power adjustment and reverse system - S2S technology - thereby limiting wrist and arm fatigue.



CP6773

COMPACT, ROBUST & POWERFUL FOR INDUSTRIAL MAINTENANCE

FEATURES AND BENEFITS

- Powerful hard hitting twin hammer clutch mechanism
- Flexibility and safety is guaranteed with the double hole and ring retaining system.
- Steel clutch housing and aluminium motor housing for robustness
- Short and narrow side-to-centre for easy access



CP6910-P24

POWERFUL, DURABLE & COMFORTABLE

FEATURES AND BENEFITS

- Reliable oil bath pinless rocking dog mechanism for hard and soft joint applications
- Pinless rocking dog mechanism gives a low vibration sensation even at very high torque
- Lightweight aluminium body and clutch housing with rubber protective cover for high durability
- Extremely comfortable rotating rubber side handle for operator comfort and transportation

CP7773

Same features as CP6773 with aluminium impact clutch housing

See accessories page 63

MODEL	PART NUMBER	DRIVE	IMPACT MECHANISM	BLOWS PER MINUTE	FREE SPEED		WORKING TORQUE (FW)		MAX TORQUE (REV)		NET WEIGHT		LENGTH		AIR CONS @LOAD		VIBRATION LEVEL ISO 22827 (M/S ²)		SOUND PRESS.	SOUND POWER	AIR INLET
					rpm	ft.lb	Nm	ft.lb	Nm	lb	kg	in.	mm	cfm	l/s	a	k	ISO 15744 - dB(A)	in.		
CP6773	6151590410	1	Twin hammer	900	6300	258-952	350-1290	1200	1630	12.3	5.6	8.96	227.5	30	14.2	1.3	4.3	96	107	3/8	
CP7773	8941077730	1	Twin hammer	900	6300	100-950	136-1280	1200	1630	12.1	5.5	9.21	234	30	14.2	4.2	13.8	96	107	3/8	
CP7779	8941077791	1	Twin hammer	1200	6500	300-1,080	407-1460	1440	1950	7.28	3.3	8.07	205	31	14.7	1.5	4.9	96.8	107.8	3/8	
CP6910-P24	6151590070	1	Pinless rocking dog	650	5000	369-1,550	500-2100	1920	2600	22.4	10.2	11.42	290	40.2	19	2.5	8.2	97	108	1/2	

All models: Hose int. 3/8" (10 mm) - @90 PSI (@6.3 Bar)

Listed specifications are for reference only. Please check documents in each tool.

Impact wrenches

Output drive 1"



CP6070-P15H

THE BEST SUPER INDUSTRIAL

FEATURES AND BENEFITS

- A very compact design to meet applications in very tight environments
- Reliable 2-jaw clutch mechanism for hard and soft joint application
- Low vibration feeling for operator comfort even at very high torque.
- Aluminium body and robust steel clutch housing provides enhanced durability
- Hole type socket retainer with O-ring for safety



CP6778EX-P18D

NEW RANGE - PREMIUM COMPOSITE!

FEATURES AND BENEFITS

- Reliable twin hammer clutch mechanism in oil bath for hard joint applications.
- ATEX certified IP6 dust-proof
- Square drive shaft with ring or dual version for a wide variety of applications
- Low noise and low vibration for operator comfort
- Comfortable handle with rubber grip & suspension bail included



CP0611P RS

THE BEST SUPER INDUSTRIAL !

FEATURES AND BENEFITS

- Reliable 2 jaws clutch mechanism for hard and soft joint applications
- Durable lightweight aluminium body
- Robust steel clutch housing for extreme durability
- 2-jaw clutch ensures progressive torque increase for high torque bolt disassembly applications with minimal vibration
- 360° rotatable side handle offers excellent grip for all applications

CP0611P RLS

Same features as CP0611P RS with 5" spline output

See accessories page 63

MODEL	PART NUMBER	DRIVE	IMPACT MECHANISM	BLOWS PER MINUTE	FREE SPEED	WORKING TORQUE (FW)	MAX TORQUE (REV)	NET WEIGHT	LENGTH	AIR CONS @LOAD	VIBRATION LEVEL ISO 28927 (M/S ²)	SOUND PRESS.	SOUND POWER	AIR INLET						
		in.			rpm	ft.lb	Nm	lb	kg	in.	mm	cfm	l/s	a	k	ISO 15744 - dB(A)	in.			
CP6778EX-P18D	6151590590	1	Twin hammer	1050	5100	295-1,030	400-1400	1290	1750	10.1	4.6	10.04	255	38	18	9.4	2.4	94	105	3/8
CP6070-P15H	6151590110	1	2-jaws	1100	4000	199-900	270-1220	1100	1490	11.9	5.4	8.94	227	52.9	25	13.9	4.1	92	103	3/8
CP0611P RS	6151590050	1	2-jaws	1020	3500	900-1,800	1220-2440	2800	3790	23.1	10.5	10.71	272	48	22.6	16.8	4.7	102	113	1/2
CP0611P RLS	6151590060	#5 Spline	2-jaws	1020	3500	900-1,800	1220-2440	2800	3790	23.1	10.5	10.71	272	48	22.6	16.8	4.7	102	113	1/2

All models: Hose int. 3/8" (10 mm) - @90 PSI (@6.3 Bar)

Listed specifications are for reference only. Please check documents in each tool.

Output drive 1"



CP7782

HIGH TORQUE & COMFORT

FEATURES AND BENEFITS

- 1,920 ft.lbs (2,600 Nm) of max torque in reverse position for high productivity
- Metal housing and pinless closed reinforced rocking dog impact mechanism for high durability
- Power control regulators at the rear of the unit with 3 reverse and 3 forward positions
- Integrated protective cover on the clutch housing protects both applications & tool
- Low vibration for improved comfort



CP6773-D18D

COMPACT, ROBUST & POWERFUL FOR INDUSTRIAL MAINTENANCE

FEATURES AND BENEFITS

- Powerful hard hitting twin hammer clutch mechanism
- Flexibility and safety is guaranteed with the double hole and ring retaining system.
- Steel clutch housing and aluminium motor housing for robustness
- Short and narrow side-to-centre for easy access



CP6920-D24

POWERFUL, DURABLE & COMFORTABLE

FEATURES AND BENEFITS

- Reliable oil bath pinless rocking dog mechanism for hard and soft joint applications
- Pinless rocking dog mechanism gives a low vibration sensation even at very high torque
- Lightweight aluminium body and clutch housing with rubber protective cover for high durability
- Extremely comfortable rotating rubber side handle for operator comfort and transportation

CP7782-6

Same features as CP7782 with long anvil

See accessories page 63

MODEL	PART NUMBER	DRIVE	IMPACT MECHANISM	BLOWS PER MINUTE	FREE SPEED	WORKING TORQUE (FW)	MAX TORQUE (REV)	NET WEIGHT	LENGTH	AIR CONS @LOAD	VIBRATION LEVEL ISO 28927 (M/S ²)	SOUND PRESS.	SOUND POWER	AIR INLET						
		in.		rpm	ft.lb	Nm	ft.lb	Nm	lb	kg	in.	mm	cfm	l/s	a	k	ISO 15744 - dB(A)	in.		
CP7782	8941077820	1	Pinless rocking dog	500	5200	369-1,480	500-2000	1920	2600	22.2	10.1	14.57	370	40.7	19.2	7.8	1.8	100	111	1/2
CP7782-6	8941077826	1	Pinless rocking dog	500	5200	369-1,480	500-2000	1920	2600	25.5	11.6	20.47	520	40.7	19.2	7.8	1.8	100	111	1/2
CP7783	8941077830	1	Pinless rocking dog	900	6200	413-1,250	560-1700	1770	2400	18.5	8.4	13.78	350	40.4	19	15.1	4.1	102	113	1/2
CP7783-6	8941077836	1	Pinless rocking dog	900	6200	413-1,250	560-1700	1770	2400	20.9	9.5	19.69	500	40.4	19	15.1	4.1	102	113	1/2
CP6773-D18D	6151590650	1	Twin hammer	730	6600	251-1,070	340-1450	1300	1760	14.7	6.7	11.42	290	41	19.3	11.4	2.9	98	109	1/2
CP6920-D24	6151590080	1	Pinless rocking dog	650	5000	369-1,550	500-2100	1920	2600	22.7	10.3	14.17	360	40.2	19	8.4	2.8	100	111	1/2

All models: Hose int. 3/8" (10 mm) - @90 PSI (@6.3 Bar)

Listed specifications are for reference only. Please check documents in each tool.

Impact wrenches



CP0611-D28H

Output drive 1"

THE BEST SUPER INDUSTRIAL !

For heavy duty industrial users looking for efficient, ergonomic bolting solutions, the CP0611 Series - 1"/#5 impact wrench is light weight, reliable and offers powerful torque and a high degree of comfort.



FEATURES AND BENEFITS

- Reliable 2 jaws clutch mechanism for hard and soft joint applications
- Durable lightweight aluminium body
- Robust steel clutch housing for extreme durability
- 2-jaw clutch ensures progressive torque increase for high torque bolt disassembly applications with minimal vibration
- 360° rotatable side handle offers excellent grip for all applications

See accessories page 63

MODEL	PART NUMBER	DRIVE	IMPACT MECHANISM	BLOWS PER MINUTE	FREE SPEED	WORKING TORQUE (FW)		MAX TORQUE (REV)		NET WEIGHT		LENGTH		AIR CONS @LOAD		VIBRATION LEVEL ISO 28927 (MS2)		SOUND PRESS.	SOUND POWER	AIR INLET
		in.			rpm	ft.lb	Nm	ft.lb	Nm	lb	kg	in.	mm	cfm	l/s	a	k	ISO 15744 - dB(A)		in.
CP0611-D28H	6151590160	1	2-jaws	1020	3500	900-1,800	1220-2440	2800	3790	22.9	10.4	14.17	360	68	32	18	4.1	99	110	1/2

All models: Hose int. 3/8" (10 mm) - @90 PSI (@6.3 Bar)

Listed specifications are for reference only. Please check documents in each tool.

Output drive #5 Spline”



CP0611-D28L

THE BEST SUPER INDUSTRIAL !

FEATURES AND BENEFITS

- Reliable 2 jaws clutch mechanism for hard and soft joint applications
- Durable lightweight aluminium body
- Robust steel clutch housing for extreme durability
- 2-jaw clutch ensures progressive torque increase for high torque bolt disassembly applications with minimal vibration
- 360° rotatable side handle offers excellent grip for all applications



CP6120-D35L

THE MOST PRODUCTIVE 1-1/2"

FEATURES AND BENEFITS

- Reliable 2-jaw clutch mechanism can be set for hard and soft joint applications
- 2-jaw clutch minimizes vibration sensation
- Robust steel clutch housing guarantees durability
- High progressive max torque for smooth operation
- Durable lightweight aluminium body offers operator comfort,

See accessories page 63

MODEL	PART NUMBER	DRIVE	IMPACT MECHANISM	BLOWS PER MINUTE	FREE SPEED	WORKING TORQUE (FW)		MAX TORQUE (REV)		NET WEIGHT		LENGTH		AIR CONS @LOAD		VIBRATION LEVEL ISO 28927 (M/S ²)		SOUND PRESS.	SOUND POWER	AIR INLET
						ft.lb	Nm	ft.lb	Nm	lb	kg	in.	mm	cfm	l/s	a	k	ISO 15744 - dB(A)	in.	
CP0611-D28L	6151590170	#5 Spline	2-jaws	1020	3500	900-1,800	1220-2440	2800	3790	22.9	10.4	14.17	360	68	32	18	4.1	99	110	1/2
CP6120-D35L	6151590130	#5 Spline	2-jaws	960	3500	601-2,000	815-2710	3600	4880	34.5	15.6	16.54	420	60	28.3	21.8	11.8	97	108	1/2

All models: Hose int. 3/8" (10 mm) - @90 PSI (@6.3 Bar)

Listed specifications are for reference only. Please check documents in each tool.

Impact wrenches

Output drive 1-1/2"



CP6930-D35

POWERFUL, ROBUST & COMFORTABLE FOR INDUSTRIAL MAINTENANCE

FEATURES AND BENEFITS

- Reliable twin hammer clutch mechanism in oil bath for hard joint application
- A 4-position power regulator for better power control.
- Aluminium clutch body and housing for high robustness
- D-shaped side handle for improved grip



CP6135-D80

BEST POWER TO WEIGHT RATIO - SUPER INDUSTRIAL APP

FEATURES AND BENEFITS

- Reliable pinless rocking dog clutch mechanism.
- Lightweight, low vibration for operational comfort even at very high torque.
- Durable aluminium body and robust steel clutch housing for extreme durability.
- Teasing trigger allows a high progressive max torque for smooth operation .



See accessories page 63

MODEL	PART NUMBER	DRIVE	IMPACT MECHANISM	BLOWS PER MINUTE	FREE SPEED	WORKING TORQUE (FW)		MAX TORQUE (REV)		NET WEIGHT		LENGTH		AIR CONS @LOAD		VIBRATION LEVEL ISO 28927 (MS2)		SOUND PRESS.	SOUND POWER	AIR INLET
		in.			rpm	ft.lb	Nm	ft.lb	Nm	lb	kg	in.	mm	cfm	l/s	a	k	ISO 15744 - dB(A)		in.
CP6930-D35	6151590390	1-1/2	Twin hammer	850	4300	443-1,950	600-2650	2880	3900	31.6	14.3	17.32	440	64	30	15.1	5.5	101.5	112.5	1/2
CP6135-D80	6151590380	1-1/2	Pinless rocking dog	750	2800	740-4,055	1000-5500	5900	8000	35.2	16	16.06	408	84.5	40	13.6	2.2	98	109	1/2

All models: Hose int. 3/8" (10 mm) - @90 PSI (@6.3 Bar)

Listed specifications are for reference only. Please check documents in each tool.

Impact wrenches

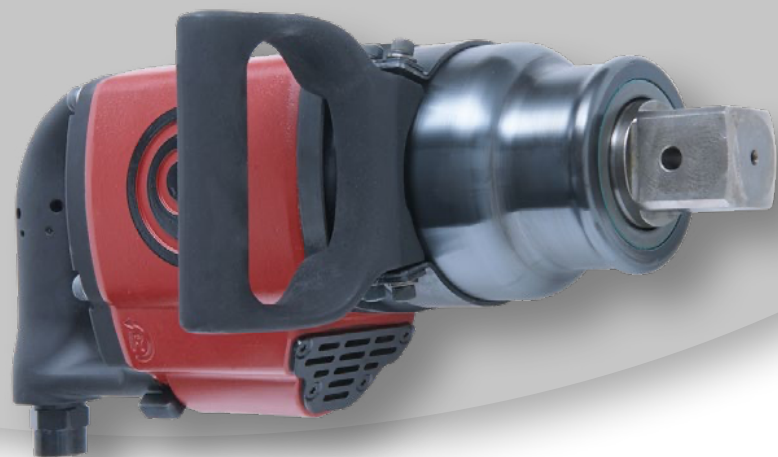


CP6120-D35H

Output drive 1-1/2"

THE MOST PRODUCTIVE 1-1/2"

For heavy duty industrial users looking for medium to strong torque on soft and hard joints, the CP6120 Series - 1-1/2", #5 impact wrench is strong enough to allow for intense use and is also comfortable due to low vibration levels.



FEATURES AND BENEFITS

- Reliable 2-jaw clutch mechanism can be set for hard and soft joint applications
- 2-jaw clutch minimizes vibration sensation
- Robust steel clutch housing guarantees durability
- High progressive max torque for smooth operation
- Durable lightweight aluminium body offers operator comfort,

See accessories page 63

MODEL	PART NUMBER	DRIVE	IMPACT MECHANISM	BLOWS PER MINUTE	FREE SPEED	WORKING TORQUE (FW)		MAX TORQUE (REV)		NET WEIGHT		LENGTH		AIR CONS @LOAD	VIBRATION LEVEL ISO 28927 (M/S ²)	SOUND PRESS.	SOUND POWER	AIR INLET		
		in.			rpm	ft.lb	Nm	ft.lb	Nm	lb	kg	in.	mm	cfm	l/s	a	k	ISO 15744 - dB(A)	in.	
CP6120-D35H	6151590120	1-1/2	2-jaws	960	3500	601-2,000	815-2710	3600	4880	34.5	15.6	16.54	420	60	28.3	21.8	11.8	97	108	1/2

All models: Hose int. 3/8" (10 mm) - @90 PSI (@6.3 Bar)

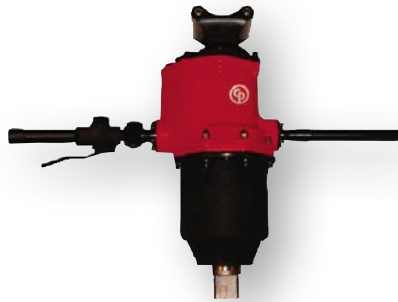
Listed specifications are for reference only. Please check documents in each tool.

Impact wrenches

Output drive 1-1/2" - 2-1/2"



CP6130-T70



CP6240-T120

POWERFUL, DURABLE & COMFORTABLE

FEATURES AND BENEFITS

- Reliable double rocking dog clutch mechanism for hard and soft joint application
- 5-position regulator, progressive and easy reversing trigger. Low vibration level for high user comfort
- Always in stock for fast delivery.



CP6130-T70

See accessories page 63

MODEL	PART NUMBER	DRIVE	IMPACT MECHANISM	BLOWS PER MINUTE	FREE SPEED	WORKING TORQUE (FW)	MAX TORQUE (REV)	NET WEIGHT	LENGTH	AIR CONS @LOAD	VIBRATION LEVEL ISO 28927 (MS2)	SOUND PRESS.	SOUND POWER	AIR INLET
		in.			rpm	ft.lb Nm	ft.lb Nm	lb kg	in. mm	cfm l/s	a k	ISO 15744 - dB(A)		in.
CP6130-T70	6151590010	1-1/2	Double rocking dog	900	4000	2430-5,240 3.3-7100	9220 12500	72.7 33	19.69 500	67.3 31.8	4.7 1.7	104	115	1
CP6240-T120	6151590020	2-1/2	Double rocking dog	800	3000	3.8-9,150 3760-12400	18400 25000	132 60	24.02 610	74.9 35.3	4.5 1.5	107	118	1

All models: Hose int. 3/8" (10 mm) - @90 PSI (@6.3 Bar)

Listed specifications are for reference only. Please check documents in each tool.

Ratchet wrenches

Output drive 1/4" - 3/8"



CP9426

HIGH POWER AND ULTRA COMPACT

FEATURES AND BENEFITS

- High power (27 ft.lbs / 35 Nm) for better productivity
- Extremely compact tool (5.1" / 130 mm) that enables improved comfort and access in hard to reach places



CP825C

EXTREMELY COMPACT

FEATURES AND BENEFITS

- Comfortable ultra-compact (6.6 in/169 mm long), lightweight (1.1 lbs/0.5 kg) tool that allows ease of access in hard-to-reach areas
- Aluminium body with insulating composite housing and head composite protective cover supplied with the tool
- Short and wide teasing lever to better adjust torque with 280 rpm
- Back exhaust avoids blowing dirt and dust
- New power easy-to-use regulator to regulate speed from zero to maximum



CP826

DURABILITY AND COMFORT

FEATURES AND BENEFITS

- A compact tool with polyurethane grip for better comfort and control
- Teasing lever to better adjust the torque with 250 rpm
- High durability with an advanced head design that virtually eliminates slippage

CP9427

Same features as CP9426 with 3/8" output drive and socket release button

CP826T

Same features as CP826 with 3/8" output drive

See accessories page 63

MODEL	PART NUMBER	DRIVE	FREE SPEED		WORKING TORQUE (REV)			OVERALL LENGTH		NET WEIGHT		AIR CONS @LOAD		VIBRATION	SOUND PRESSURE	SOUND POWER	AIR INLET
			rpm	ft.lb	Nm	ft.lb	Nm	in.	mm	lb	kg	cfm	l/s				
CP9426	6151919426	1/4	270	5.2	7	25.8	35	5.04	128	1.08	0.49	11	5.6	5	82	93	1/4
CP9427	6151919427	3/8	270	5.2	7	25.8	35	5.04	128	1.08	0.49	11	5.6	5	82	93	1/4
CP825C	8941082511	1/4	280	3.7	5	18.4	25	6.65	169	1.1	0.5	10	5.1	4	82	93	1/4
CP826	T025074	1/4	250	5.2	21	15.5	21	7.99	203	1.12	0.51	14	6.6	2.9	91	102	1/4
CP826T	T025075	3/8	250	5.2	7	15.5	21	7.99	203	1.12	0.51	14	6.6	2.9	91	102	1/4

All models: Hose int. 3/8" (10 mm) - @90 PSI (@6.3 Bar)

Listed specifications are for reference only. Please check documents in each tool.

Ratchet wrenches

Output drive 3/8" - 1/2"



CP825CT

EXTREMELY COMPACT

FEATURES AND BENEFITS

- Comfortable ultra-compact (6.6 in/169 mm long), lightweight (1.1 lbs/0.5 kg) tool that allows ease of access in hard-to-reach areas
- Aluminium body with insulating composite housing and head composite protective cover supplied with the tool
- Short and wide teasing lever to better adjust torque with 280 rpm
- Back exhaust avoids blowing dirt and dust
- New power easy-to-use regulator to regulate speed from zero to maximum



CP7829

HIGH TORQUE AND COMPACTNESS

FEATURES AND BENEFITS

- Comfortable ultra-compact (6.6 in/169 mm long), lightweight (1.1 lbs/0.5 kg) tool that allows ease of access in hard-to-reach areas
- Adjustable side exhaust avoids blowing dirt and dust
- Ergonomic composite grip insulates operators' hands from cold
- Teasing trigger to better adjust the torque with 225 rpm



CP7830Q

HIGH TORQUE AND DURABILITY FOR GENERAL MAINTENANCE

FEATURES AND BENEFITS

- Adjustable side exhaust and low noise for improved comfort
- Progressive teasing throttle to better adjust the torque
- Grease fitting on the reverse button for easier lubrication
- Sturdy aluminium alloy head and CP's patented TriSpring anti-slip head design with protective head cover for higher durability

CP7829H

Same features as CP7829 with 1/2" output drive

See accessories page 63

MODEL	PART NUMBER	DRIVE	FREE SPEED		WORKING TORQUE (REV)			OVERALL LENGTH		NET WEIGHT		AIR CONS @LOAD		VIBRATION	SOUND PRESSURE	SOUND POWER	AIR INLET
			in.	rpm	ft.lb	Nm	ft.lb	Nm	in.	mm	lb	kg	cfm				
CP825CT	8941082512	3/8	280	3.7	25	18.4	35	6.65	169	1.1	0.5	11	5.1	4	82	93	1/4
CP7829	8941078293	3/8	225	11.1	15	50.2	68	10.71	272	2.72	1.24	10.9	5.2	8.6	85	96	1/4
CP7829H	8941078294	1/2	225	11.1	15	54.6	74	10.71	272	2.73	1.24	10.9	5.2	8.6	85	96	1/4
CP7830Q	8941078306	3/8	190	9.6	13	90	122	12.01	305	2.65	1.2	21	8.7	4.1	85	96	1/4

All models: Hose int. 3/8" (10 mm) - @90 PSI (@6.3 Bar)

Listed specifications are for reference only. Please check documents in each tool.

Ratchet wrenches

Output drive 3/8" - 1/2"



CP886H

HIGH TORQUE AND LOW PROFILE

FEATURES AND BENEFITS

- Compact head design for improved access in tight places
- Easy grip reverse for simple directional changes



CP828H

DURABLE

FEATURES AND BENEFITS

- Aluminium alloy head and CP's patented TriSpring anti-slip head design lead to greater durability
- Grease fitting on the reverse button for easier lubrication



CP7830HQ

HIGH TORQUE AND DURABILITY FOR GENERAL MAINTENANCE

FEATURES AND BENEFITS

- Adjustable side exhaust and low noise for improved comfort
- Progressive teasing throttle to better adjust the torque
- Grease fitting on the reverse button for easier lubrication
- Sturdy aluminium alloy head and CP's patented TriSpring anti-slip head design with protective head cover for higher durability

CP886

Same features as CP886H with 3/8" output drive

CP828

Same features as CP828H with 3/8" output drive

See accessories page 63

MODEL	PART NUMBER	DRIVE	FREE SPEED		WORKING TORQUE (REV)		MAX TORQUE (REV)		OVERALL LENGTH		NET WEIGHT		AIR CONS @LOAD		VIBRATION	SOUND PRESSURE	SOUND POWER	AIR INLET
			in.	rpm	ft.lb	Nm	ft.lb	Nm	in.	mm	lb	kg	cfm	l/s				
CP886H	T024391	1/2	160	9.6	13	50.2	68	10.24	260	2.62	1.19	17	8	3.7	99	110	1/4	
CP886	T024240	3/8	160	9.6	13	50.2	68	10.24	260	2.62	1.19	17	8	3.7	99	110	1/4	
CP828H	T022970	1/2	150	9.6	13	51.6	70	10	254	2.43	1.1	15	7.1	3.2	97	108	1/4	
CP828	T022708	3/8	150	9.6	13	51.6	70	10	254	2.43	1.1	15	7.1	3.2	97	108	1/4	
CP7830HQ	8941078308	1/2	190	9.6	13	90	122	12.01	305	2.65	1.2	21	8.7	4.1	85	96	1/4	

All models: Hose int. 3/8" (10 mm) - @90 PSI (@6.3 Bar)

Listed specifications are for reference only. Please check documents in each tool.